

FORMS CHECKLIST

CUSTOMER INFORMATION

Name:

Phone #:

Cell #:

Address:

Delivery Date:

Delivery Time:

MATERIALS REQUIRED

Form Panels

Wall Straightening Screws

Tie Bar

Quick-Strip Ties (6")

Quick-Strip Ties (8")

Tie Wire

Anchor Bolts (1/2" x 8")

2" Brad Nails

3" Duplex Nails

Finishing Nailer & Air Compressor w/ Hose (used for tacking form panels)

Hilti Hammer-Drill w/ 3/16" Bit

Rebar - 10mm (3/8")

Rebar - 12mm (1/2")

Rebar - 15mm (5/8")

Rebar bending and cutting is free with purchase of rebar

Concrete Vibrator

Vibrator Lead

**WE REQUIRE ALL WALL LENGTHS, HEIGHTS, THICKNESSES, AND STEPS (UP & DOWN)
TO BE MARKED CLEARLY ON THE PLAN TO BUILD THE FORM ORDER**

Estimated cost for form panel rental, tie-bar rental, and ties: \$1.30-\$1.40 per ft²
(delivery and taxes not included in this estimate)

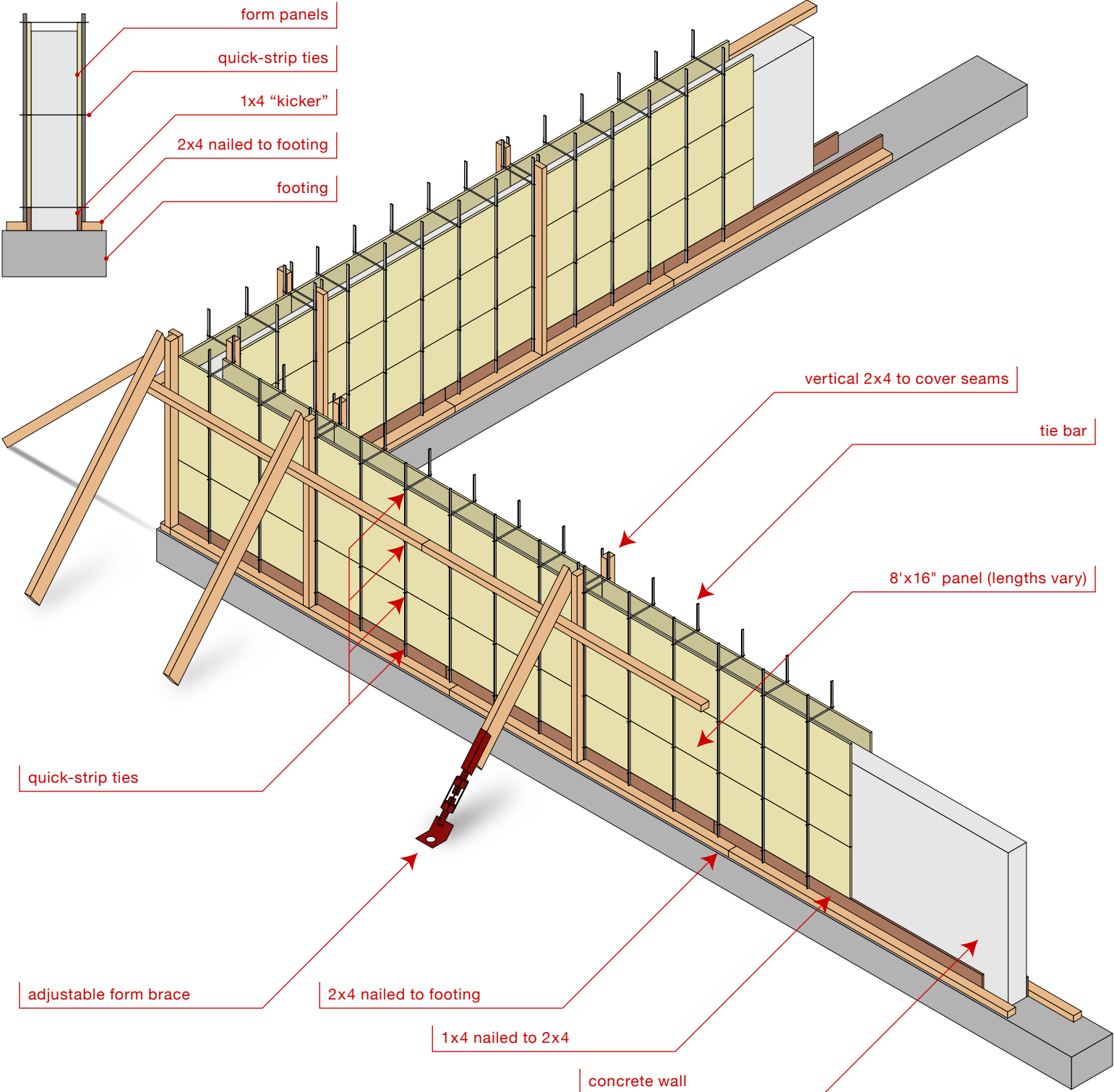
SHARECOST

RENTALS & SALES

SHARECOST RENTALS & SALES (1997) LTD
1716 Northfield Road • Nanaimo, BC • V9S 3B2
Phone: (250) 758-2401 • Fax: (250) 751-0641
Website: www.sharecost.ca

FORM WALL DETAIL

CROSS-SECTION VIEW



SHARECOST RENTALS & SALES (1997) LTD
1716 Northfield Road • Nanaimo, BC • V9S 3B2
Phone: (250) 758-2401 • Fax: (250) 751-0641
Website: www.sharecost.ca

FORM OVERVIEW

CONCRETE FORMS POLICY

- forms are provided on a “per-job” basis, up to a total of 14 days
- forms are provided to you pre-oiled – you do not have to re-oil the panels at the end of the rental
- tie bar is discounted 33% if returned to Sharecost tied in bundles of ten (using tie wire)
- if a form panel is cut, you will pay the replacement cost of a new panel
- **for complete information on concrete form rentals, please refer to the rest of this guide**

COST ESTIMATE

Estimated Cost: \$1.40 per ft²

HOW TO GET AN ESTIMATE FOR FORM RENTALS

1. Calculate the square-footage of the outer wall only
2. Multiply the ft² by \$1.40 for your estimated cost

This estimate includes:

- tie bar rental
- form panel rental
- quick-strip ties (6" / 8")

The above estimated price does not include: taxes or applicable delivery & pick-up fees.
Prices are subject to change at any time.

The above estimate is for 6" and 8" walls up to 6 feet tall only.

Walls taller than 6 feet will cost more due to reduced quick-strip spacing (12" vs. 16"), which requires more tie bar and quick-strip ties.

WHAT WE REQUIRE

- ① **Supply Sharecost with a copy of your plan a few days before you need the forms on site.** We require ALL wall lengths, heights, thicknesses, and steps (up & down) to be marked CLEARLY on the plan.
- ② **We require a credit card deposit to cover the estimated cost of the form rental.** This includes a \$100 form design deposit. This fee is refunded back to you once all materials are returned at the end of the rental period. If you cancel the order after we have started the form design process, we will cancel your deposit but keep the \$100 form design fee.

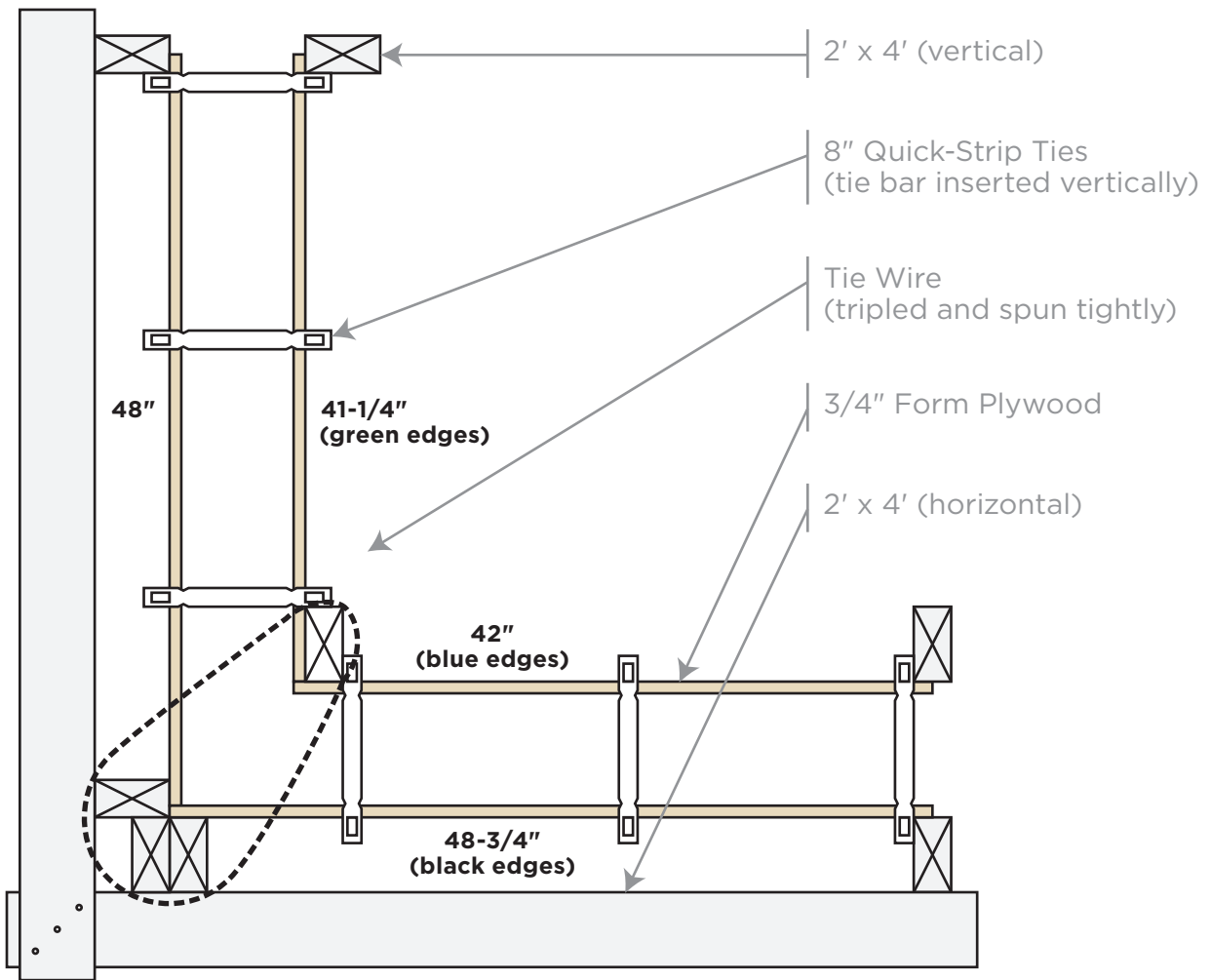
WHAT WE PROVIDE

- ① We supply you with a **custom design of your form set-up.** This gives you an easy-to-follow, itemized plan showing the location of all the form panels to make it easy for you to build.
- ② The forms (and all other materials) can be **delivered to your job site** (or picked up at our store).
- ③ Phone us at (250) 758-2401 when the forms are **ready to be picked up** (or return them to our store).

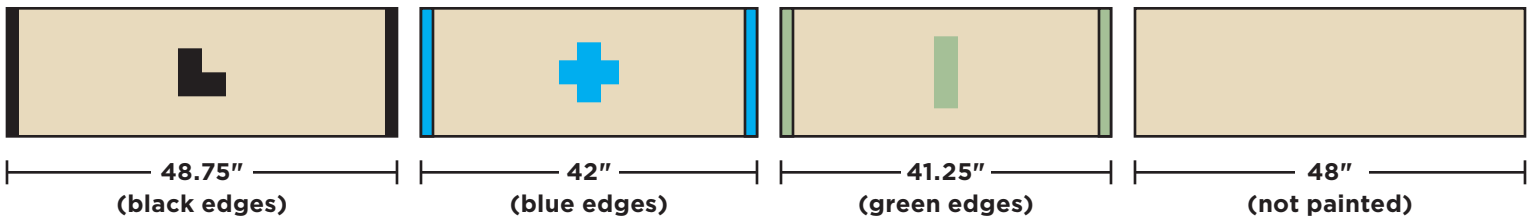
Form Corner - 6" Wall TOP-DOWN VIEW

MUST READ BEFORE RAISING FORM-WORK

PLEASE NOTE The below design is for **6-inch wide** walls only. Footing and lower 2x4s have not been shown in this diagram for clarity.



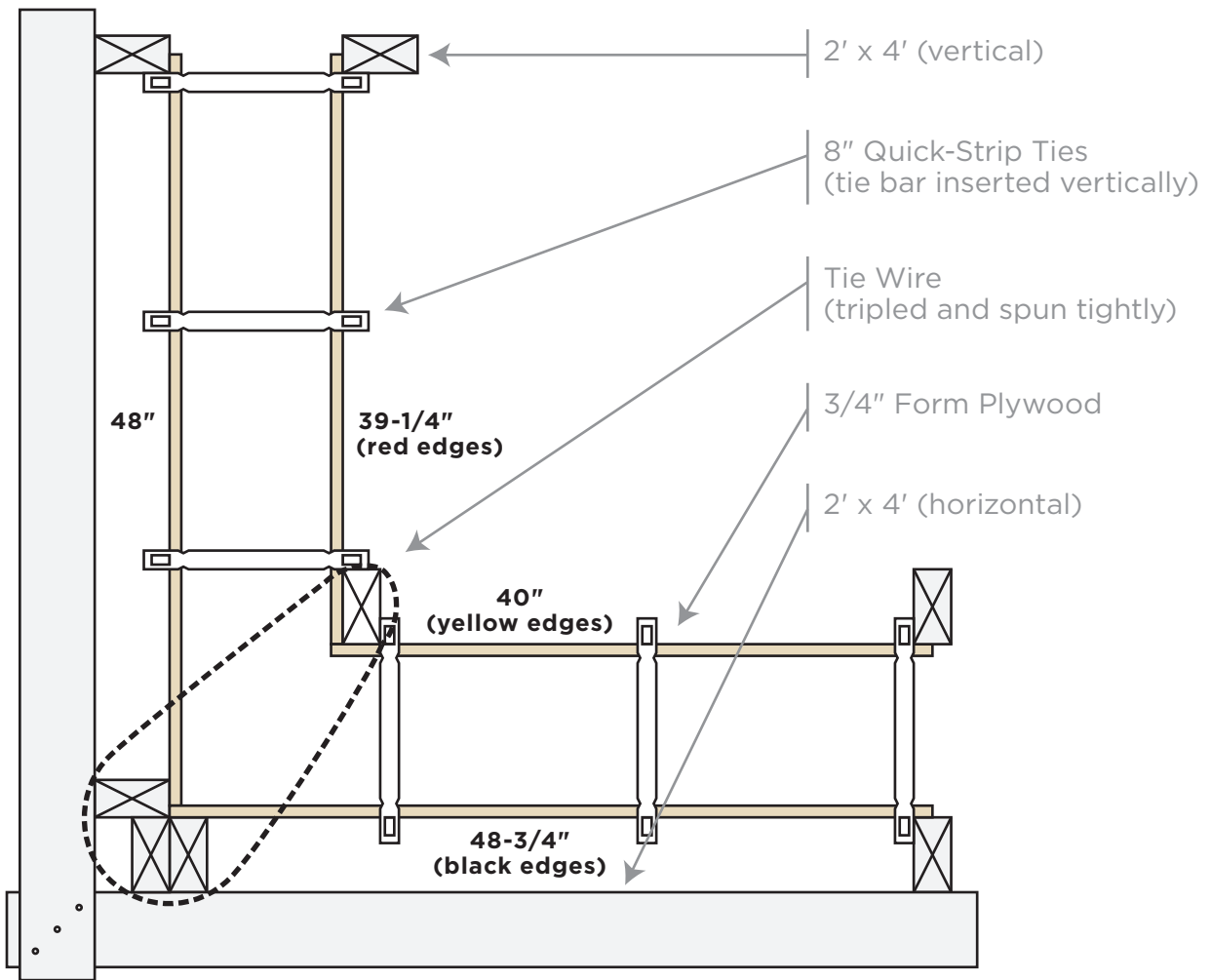
↓ **SIDE-VIEW OF CORNER PANELS** ↓



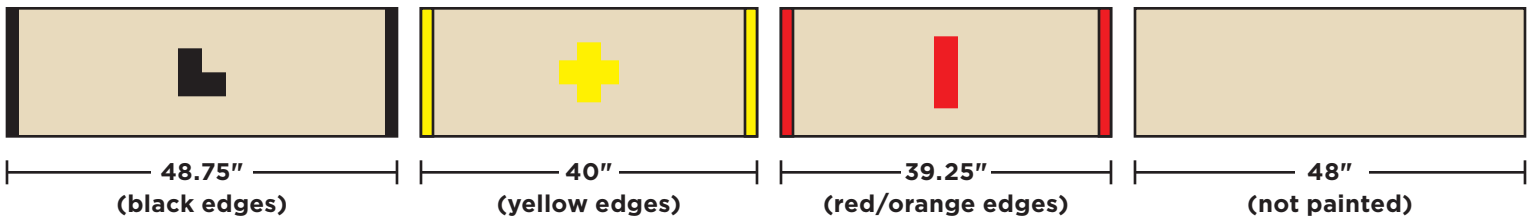
Form Corner - 8" Wall TOP-DOWN VIEW

MUST READ BEFORE RAISING FORM-WORK

PLEASE NOTE The below design is for **8-inch wide** walls only. Footing and lower 2x4s have not been shown in this diagram for clarity.



↓ SIDE-VIEW OF CORNER PANELS ↓



FORM SETUP GUIDE

MUST READ BEFORE RAISING FORM-WORK

TERMS OF RENTAL

- Form panels and tie bar are a **two (2) week rental, based on one use.**
- We provide the forms to you cleaned and pre-oiled - you do not clean or oil them.
- Tie bar will be discounted 33% if returned as received, in bundles of 10 pieces.
- A \$100 deposit is required to plot the form plan and the pick order. This charge will be credited to the final rental invoice. **The deposit will not be refunded on cancelled orders.**

AVOIDING DAMAGE CHARGES

- **DO NOT CUT FORM PANELS.** If you cut, you buy the panel at new replacement cost.
- Do not drop form panels on their corners.
- Off-dimension gaps are to be custom fit with sheets of 3/4" plywood, cut from your own stock.
- The panels do straight walls and 90° corners only; other angles must be cut from your own stock.
- **Use only 16 gauge 2" bright brad nails** (placed with air nailer) in the form panels - maximum 6 nails per panel. Do not use any other fastener, they are not necessary and will damage the forms.
- 3" common bright duplex nails are used on all other framing that involves connecting one 2x4 to another 2x4. **DO NOT USE THESE ON ANY FORM PANELS.**

SETTING UP THE FORMS

- **The outer formed wall is built first.** Make sure all the panels you need for the inner wall are inside the footing *before* the outside wall is built (otherwise you'll be passing a lot of panels over the outer wall). **If your plan has corners, start building from the corners and work inwards.**
- Build forms with red "Sharecost Rentals" logo/painted side to the outside. The blank side must face the concrete, as they are oiled to enable you to easily remove the forms.
- Tie bar ALWAYS goes vertical (up-down) with this forming system.
- We suggest 16" spacing of the quick strips and tie bar for walls up to 6' high and 12" spacing for walls 6' to 10' high. Please ask an engineer if you have any concerns.
- Wall straightening screws are usually spaced every 8'. They are used to straighten the wall after the concrete has been poured and is still in the plastic state.
- Immediately re-check wall for straightness after the pour is complete, adjust brackets to straighten wall as necessary.

WHERE TO USE 2x4s

- You will need a good amount of 2x4 for this system. We suggest using 3" bright duplex nails which allow you to pull out the nails and re-use the 2x4 when building the house.
- 2x4s are nailed (horizontally) to the foundation on both the inner and outer formed wall. This provides a surface to nail 1x6 to (required to generate a level surface to stack the forms on).
- 2x4s are used as uprights placed on all vertical seams between form panels. The forms are nailed to the 2x4 here with 2", 16 gauge bright brad nails.
- A straight 2x4 is nailed on edge to the top of the vertical seam 2x4s to help straighten the wall.
- Diagonal 2x4 bracing is nailed to the tops of vertical seam 2x4 and extended out into the ...

SHARECOST

RENTALS & SALES

SHARECOST RENTALS & SALES (1997) LTD
1716 Northfield Road • Nanaimo, BC • V9S 3B2
Phone: (250) 758-2401 • Fax: (250) 751-0641
Website: www.sharecost.ca

- ... surrounding dirt forming a triangle. Some of these will have wall straightening screws attached to straighten the wall immediately after the pour.
- A 2x4 nailed to the inside of the top form panel with 2" bright brad nails is used as a pour strip marking desired concrete finish height.

BLOWOUTS

A blowout occurs when a forming system breaks open under the weight of wet concrete during a pour. **We accept no responsibility for a blow-out.** The following are some suggestions to help minimize the chance of a blowout.

- Make sure the tie bar and quick strips are installed properly. Concrete is nearly 2 tonnes/yd³. The tie bar and quick strips do all of the work to resist this mass.
- Methodically check and re-check that all tie bar are inserted into the quick strips on both sides of the wall. **If only one tie bar or quick strip is not installed, this may cause a blowout.**
- When pouring concrete into the formwork, pour the concrete in 2' lifts all the way around the formwork. This will give time for the first 2' of cement to develop some structural integrity to help take the strain off of the forms before the next 2' are applied on top.
- At corners, tie bar and quick strips do not work. Make sure to add sufficient 2x4 bracing here to strengthen the corners (see the attached **corner detail graphic** for more info). When in doubt add more bracing. Bracing is cheap; spilled concrete, hourly rates for concrete and pumper trucks are not.

TIPS & TRICKS

- For a minimum of 3 days after a pour it is absolutely critical to keep the concrete moist in order for the concrete to develop proper strength. This usually is done by keeping the forms on for three days after the pour. Ask your concrete provider for details specific to your job.
- A concrete vibrator is necessary to remove air bubbles that otherwise weaken the concrete. Plunge the vibrator every three feet into the cement, vibrate for about 5 seconds slowly drawing the vibrator up. Do not over-vibrate, otherwise you will cause segregation of the concrete into sand and gravel, which greatly weakens the concrete mix.

BEFORE FORMS ARE RETURNED

- **Remove all brad nails from form panels.**
- Stack forms and tie bar as they were received so we can safely transport them back to the shop.
- Stack forms in an area so they are accessible with the Bobcat loader.

PLEASE NOTE

- Drain pipe, fittings and filter fabric for your perimeter drainage can be brought out to your site when we are picking up the forms.
- Drainage rock is available by the yard or tonne (depending on required volumes).
- We rent Bobcat loaders and mini-excavators for doing the foundation backfill.
- We rent 700# or 1000# plates for compaction of the backfill.

SHARECOST

RENTALS & SALES

SHARECOST RENTALS & SALES (1997) LTD
1716 Northfield Road • Nanaimo, BC • V9S 3B2
Phone: (250) 758-2401 • Fax: (250) 751-0641
Website: www.sharecost.ca